

Legal and additional information

THE NEW
BUSINESS
EXPERIENCE

SAMSUNG.
PRINTING INNOVATION.

In modern society, keeping up with technology is crucial to the success of any business or the productivity of any individual. The choice of technology can make a difference to the survival and leadership for them.

As the workplace becomes more digitised and the workforce becomes more mobile, the printer and copier device must also adapt and evolve.

Today, Samsung is applying its ingenuity to develop breakthrough printing solutions that ignite productivity. Only Samsung has the electronics expertise to design and build a printer that meets the needs of today's society.

Printing for the modern world has arrived.
Samsung is printing innovation.

About Samsung Electronics Co., Ltd.

Samsung Electronics Co., Ltd. is a global leader in technology, opening new possibilities for people everywhere. Through relentless innovation and discovery, we are transforming the worlds of TVs, smartphones, tablets, PCs, cameras, home appliances, printers, LTE systems, medical devices, semiconductors and LED solutions. We employ 286,000 people across 80 countries with annual sales of US\$216.7 billion. To discover more, please visit www.samsung.com.



Real value. True performance.

Always make the right impression by using genuine Samsung supplies.



For more information
about Samsung Printing Solutions,
visit www.samsung.com/PrintingInnovation



For more information
about genuine Samsung supplies,
visit www.samsung.com/GenuineSupplies

SAMSUNG

Copyright © 2014 Samsung Electronics Co., Ltd. All rights reserved. Samsung, Business Core, SecuThru and SmarThru are either trademarks or registered trademarks of Samsung Electronics Co., Ltd. Specifications and designs are subject to change without notice. Non-metric weights and measurements are approximate. All data were deemed correct at time of creation. Samsung is not liable for errors or omissions. All brand, product, service names and logos are trademarks and/or registered trademarks of their respective owners and are hereby recognised and acknowledged.

AirPrint is a trademark of Apple Inc. Android is a trademark of Google Inc. The Android robot is reproduced or modified from work created and shared by Google and used according to terms described in the Creative Commons 3.0 Attribution License. Bonjour is trademark of Apple Inc., registered in the U.S. and other countries. IEEE is a registered trademark of the Institute of Electrical and Electronic Engineers, Inc.

¹ Mobile devices need to support NFC technology.

² There is also no app needed for iOS-supported devices using AirPrint™.

Samsung Electronics Co., Ltd.
129 Samsung-ro, Yeongtong-gu, Suwon-si, Gyeonggi-do 443-742, Korea

www.samsung.com



Samsung Multifunction SMART MultiXpress

M5370LX

The New Way of Printing, Innovated for Smarter Business



THE NEW
BUSINESS
EXPERIENCE

SAMSUNG.
PRINTING INNOVATION.

SAMSUNG

Go beyond your work capabilities with SMART print innovation

Take business performance to a new level with SMART printing

To keep up with the fast-paced business world, businesses today are embracing Bring-Your-Own-Device (BYOD) policies. This is leading to more efficient, seamless operations and highly productive, always-on employees using SMART intuitive technology in the form of smartphones and cloud computing.

Businesses now want to extend that SMART technology to all devices to gain the same level of intuitiveness and flexibility. A printer is no exception. From scanning to printing, printers are expected to have the same SMART functionalities as cutting edge mobile devices. Businesses seek SMART printing solutions that can be easily managed while still delivering powerful performance at lower costs.

Samsung's new A4 mono MultiFunction Printer (MFP)

SMART MultiXpress M5370LX provides SMART usability that allows users to work faster and more efficiently using intuitive, easy-to-use controls. And with high-performance and optimised features, these printers can meet the demands of small work groups to large departments that depend on document handling efficiency, while minimising Total Cost of Ownership (TCO).



Work smarter using the latest in intelligent touch features

Experience SMART printing, just like using a tablet



Samsung SMART UX Center powered by Android™

SMART Touch

Touch to print, just like on a tablet

The SMART MultiXpress M5370LX provides innovative usability through Samsung SMART User Experience (UX) Center as the very first Smart Android printing UX. Samsung SMART UX Center is a printing UX based on the Android OS and the first of its kind in the printing industry.

This user-friendly UX provides intuitiveness, usability and extendibility at the same time, which ensures perfect compatibility with various Android-based smart devices.

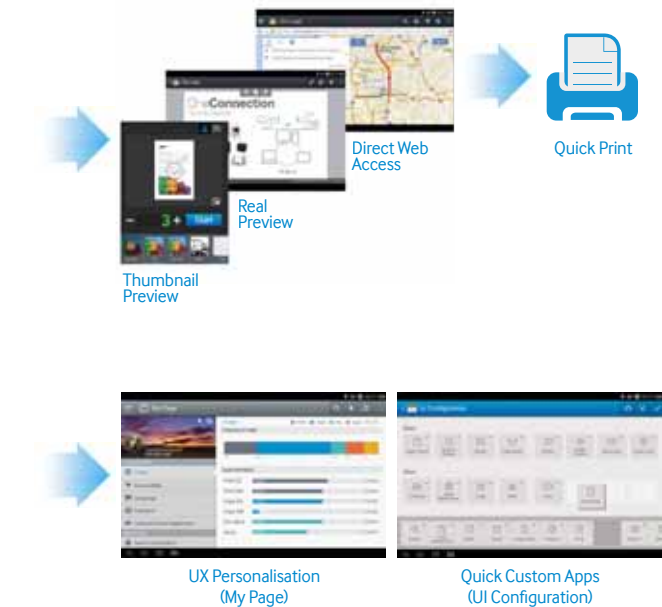
Enjoy preloaded applications and widgets

Printing applications are preloaded, including Copy, Scan/Send, Box, Job Status, Counter, Settings, Build Job, Address Book and Help, which provides users with more convenient usability. In addition, there are custom widgets for creating instant, one-tap access to frequently used functions.

SMART Use

Expand use with independent functions and extensibility

The interface also provides the Real Preview function from the preloaded applications, such as Copy, Send and Box. You can further extend usability with direct web access through the web browser to quickly print various web content, such as maps, pictures, emails and more without a PC.



SMART Manage

Personalise the UX through My Page

Enhance the UX by arranging and managing the environment by user with My Page. Simply customise the My Page settings and Quick Menu for each user and you can keep track of an individual's usage, control accessibility and more.

Create custom apps and UIs in a snap

Administrators can create quick custom apps directly on the devices by customising the User Interface (UI) configuration in less than a minute.

Process prints and scans at super-fast speeds without sacrificing quality

Boost productivity with ultra-fast performance

Work fast, wait less

Scan at high rate

SMART MultiXpress M5370LX is equipped with Dual-Scan ADF technology enabling them to deliver ultra-high, best-in-class scanning speeds. These workhorse MFPs can scan up to 53 single-sided images per minute (ipm) and up to 80 double-sided ipm.

Faster print processing with zero fuss

SMART MultiXpress M5370LX prints at fast speeds of up to 53 pages per minute (ppm). A 1 GHz dual-core CPU provides the power and capacity to accomplish print and copy jobs of any size or complexity swiftly. Businesses can work smoothly and operate at a much more efficient level with high-performance speed printing.



Get sharper-quality print output

Samsung's unique Rendering Engine for Clean Page (ReCP) technology delivers professional-quality output with sharp text and clean images, ensuring a perfect-looking printout every time. The innovative technology automatically sharpens the focus of both graphics and text. And with a superior resolution of 1,200 x 1,200 effective dpi, your scans, printouts and company will always look professional.



Manage operational expenses through cost-efficient attributes

Lower your TCO with cost-efficient solutions and supplies

Do more jobs, spend less

Save resources with low TCO printing

Businesses can handle heavy printing volumes while reducing labor costs with SMART MultiXpress M5370LX ultra-high-yield toner cartridges and drums. Flexible options range from toners that yield 30,000 standard black and white pages, while drums yield 100,000 standard black and white pages. These long-life consumables ensure businesses get the most out of their resources, resulting in lower TCO.



Create the printing environment that suits your needs with customised, cost-efficient solutions

Samsung's Business Core™ Printing Solutions (BCPS) work as efficiently as you do by providing cost-effective and secure print operation, increasing productivity and simplifying management. The solutions require no dedicated server and IT resources and reduce unnecessary printing and supply use, lowering TCO. These essential printing solutions include:

Business Core Printing Solutions	Benefits
SecuThru™ Lite 2	Enhances document security and reduces costs with user authentication
Secure Login Manager	Guards valuable data and devices from unauthorised use
SmarThru™ Workflow Lite	Increases productivity with an automated workflow solution
Cloud Connector	Scans to and prints from the cloud with easy, secure access
Usage Tracker	Controls printing expenses by easily tracking device usage per user



The Samsung Wireless & NFC printing option can be added to support various mobile printing solutions with just a tap, including:

- **User authentication:** Enable authorised users to tap and print to a Samsung MFP from their mobile devices.
- **Secure printing:** Authorise secure release of documents held in the printer's memory with the BCPS and just a tap on your mobile device.
- **Easy wireless setup:** Configure wireless (IP) print setup from your mobile device without complicated activation steps with just a tap.
- **Device cloning:** Clone standardised functions of an MFP with just a tap on your mobile device.



Customise your MFP with a flexible print solution

Select from a range of options to create a tailor-made MFP

Configurable devices for optimised performance

Businesses of varying sizes and industries can meet their specific needs with the SMART MultiXpress M5370LX unique configuration capabilities. Factory-provided modules serve as a basis upon which differing components are chosen along with a wide array of optional components, including but not limited to a wireless and NFC option, an FDI Kit and various stand sizes.

Configurations & Options

4-Bin Mailbox

- 400 sheets

2-Bin Finisher

- 100/500 sheets

Staples

1-Bin Finisher

- 500 sheets

Fax Kit

FDI Kit

DADF (standard)
Dual Scan Automatic Document Feeder

- 100-sheet capacity
- Single-pass 2-sided document scanning
- Paper empty / width / length detection

Wireless & NFC Option

- IEEE 802.11 b/g/n
- NFC (Active Type)

High-Capacity Feeder

- 2,100 sheets

Second Cassette Feeder

- 520 sheets
- 1 stack

Second Cassette Feeder

- 520 sheets
- 1 stack

Second Cassette Feeder

- 520 sheets
- Up to 3 stacks

High-Capacity Feeder

- 2,100 sheets

Cabinet Stand

Short Stand

Samsung Multifunction SMART MultiXpress M5370LX

Technical details made to support your business

General Specifications

Speed	53 ppm
Processor	1 GHz Dual Core
Memory	2 GB DDR3 Memory
Operational Panel	10.1" Color Touchscreen Panel
Interface	Hi-Speed USB 2.0 Device (1EA), Host (3EA), Ethernet 10/100/1000 BaseTX, IEEE 802.11 b/g/n + NFC active (Optional)
Duty Cycle. Monthly	300,000 Images
Dimension (W x D x H)	630 x 506 x 636 mm (24.8" x 19.9" x 25.0")
Weight	49.0 kg
Network Protocols	TCP / IPv4 / HTTP / HTTPS / SNMP (v1.2/v3) / LDAP / LDAPS / SMTP / SSL / TLS / IPsec / DNS / WINS / SLP / Bonjour / SSDP / DDNS / DHCP/BOOTP / IPv6 / NetBIOS over TCP / IP
OS Compatibility	- Windows: XP (32 / 64 bit) / 2003 Server (32 / 64 bit) / Vista (32 / 64 bit) / 2008 Server (32 / 64 bit) / 7 (32 / 64 bit) / 2008 Server R2 / Win8 (32 / 64 bit) / 2012 (64 bit) - Linux: Red Hat Enterprise Linux 5 / 6, Fedora 11 / 12 / 13 / 14 / 15 / 16 / 17 / 18 / 19, openSUSE 11.0 / 11.1 / 11.2 / 11.3 / 11.4 / 12.1 / 12.2 / 12.3, Ubuntu 10.04 / 10.10 / 11.04 / 11.10 / 12.04 / 12.10 / 13.04, SUSE Linux Enterprise Desktop 10 / 11, Debian 5.0 / 6.0 / 7.0 / 7.1, Mint 13 / 14 / 15 - UNIX: Sun Solaris 9 / 10 / 11 (x86 / SPARC) / HP-UNIX 11.0 / 11i v1 / 11i v2 / 11i v3 (PA-RISC / Itanium) / IBM AIX 5.1 / 5.2 / 5.3 / 5.4 / 6.1 / 7.1 (PowerPC) - Mac OS: X 10.5 - 10.9

Paper Handling

Input Capacity & Types	Max 3,140 Sheets @ 75 g/m ² (Std 520 + MP 100 + 1 SCF 500 + 1 HCF 2,140 Sheets @ 75 g/m ²)
Output Capacity & Types	500 Sheets @ 75 g/m ² Face Down
Media Size	Letter / Legal / Oficio / Folio / A4 / JIS B5 / ISO B5 / Executive / A5 / Statement / A6 / PostCard 4x6 / Envelope B5 / Envelope Monarch / Envelope COM-10 / Envelope DL / Envelope C5 / Envelope C6 / Custom [Min: 98 x 148 mm (3.85" x 5.83") / Max: 216 x 356 mm (8.5" x 14")]
Media Type	Plain Paper / Thin Paper / Bond / Punched / Pre-Printed / Recycled / Envelope / Label / Card Stock / Letterhead / Thick / Colored / Archive
Media Weight	Supported Weight: 60 - 146 gsm (16 - 39 lb) Plain Paper: 70 - 90 gsm (18 - 24 lb) / Plain Paper (Duplex): 60 - 105 gsm (16 - 28 lb) / Thick Paper: 91 - 105 gsm (24 - 28 lb) / Thin Paper: 60 - 69 gsm (16 - 18 lb) / Bond: 105 - 120 gsm (28 - 32 lb) / Punched: 60 - 90 gsm (16 - 24 lb) / Pre-Printed: 75 - 85 gsm (20 - 23 lb) / Recycled: 60 - 85 gsm (16 - 23 lb) / Envelope: 75 - 90 gsm (20 - 24 lb) / Label: 120 - 150 gsm (32 - 40 lb) / CardStock: 90 - 163 gsm (24 - 43 lb) / Letterhead: 90 gsm cotton paper (24 lb)
ADF Document Size	Width: 145 - 216 mm (5.7" - 8.5")
ADF Capacity	Length: 145 - 356 mm (5.7" - 14.0") 100 sheets @ 75 gsm

Copy Specification

First Copy Out Time	4.5 sec
Resolution	Up to 1,200 x 1,200 dpi
Zoom Rate	25% - 400%
Multi Copy	Up to 9,999
Duplex Copy	[Platen] - 1→1Sided - 1→2Sided (Book / Calendar)

Copy Features	[DADF] - 1→1Sided - 1→2Sided (Output: Book / Calendar) - 2→1Sided (Original: Book / Calendar) - 2→2Sided (Original: Book / Calendar (Output: Book / Calendar)) Erase Edge / Margin Shift (Auto Center / Custom Margin) / Book Center Erase / Form Copy / Watermark Copy / Page Numbering / Time & Date Stamp / ID Stamp / Job Program / Erase Background (Auto / Erase 7 Levels / Enhance 3 Levels) / Erase Backside Image (10 Levels) / Sharpness (11 Levels) / Negative Image (On/Off) / Job Build / Mirror
---------------	---

Print Specification

Resolution	- Up to 1,200 x 600 dpi (Optical) - Up to 1,200 x 1,200 dpi Effective Output (1,200 x 600 x 2 bit)
Emulation	SPCLC / PCL5C / PCL6 / PS3 / PDF V1.7
Fonts	- PCL: 93 Scalable Fonts / 1 Bitmap - PostScript 3: 136 Scalable Fonts
Duplex	Built-in
Utilities	Anyweb Print / Easy Printer Manager / Easy Color Manager / Easy Document Creator / Net PC Fax / Direct Printing Utility / Easy Deployment Manager / Easy Eco Driver / Universal Printer Driver / Universal Scan Driver
Solutions	SyncThru Admin 6.0 / CounThru Enterprise / CounThru Pro / SmarThruWorkFlow Lite 1.0 / SecuThru Lite 1.0 / 2.0

Scanner Specification

Speed	- Simplex: Up to 55 ipm (@ 300 dpi) - Duplex: Up to 80 ipm (@ 300 dpi)
Compatibility	TWAIN (Only for USB)
Scan Size	- Platen / ADF: Max. 216 x 356 mm (8.5" x 14")
Scan File Formats	TIFF-S / TIFF-M / JPEG / PDF / Compact PDF / XPS
Resolution	- Optical: 600 x 600 dpi - Enhanced: 4,800 x 4,800 dpi
Method	White-LED Scan Lamp Type of CCD
Scan to Destination	Scan to Email / FTP / SMB / HDD / USB / Client

Options

SCF: Second Cassette Feeder (SL-SCF5300)	Input Capacity: 250 Sheets @ 75 g/m ² Media Size: Letter / Legal / Oficio / Folio / A4 / JIS B5 / ISO B5 / Executive / A5 / Statement / Envelope Monarch / Envelope COM-10 / Envelope DL / Envelope C5 / Envelope C6 / Custom [Min: 98 x 152 mm (3.85" x 6") / Max: 216 x 356 mm (8.5" x 14")]
Media Type	Plain Paper / Thin Paper / Bond / Punched / Pre-Printed / Recycled / Envelope / Label / Cotton / CardStock / Letterhead / Thick / Colored / Archive
Media Weight	Plain Paper: 70 - 90 gsm (18 - 24 lb) / Plain Paper (Duplex): 60 - 105 gsm (16 - 28 lb) / Thin Paper: 60 - 69 gsm (16 - 18 lb) / Bond: 105 - 120 gsm (28 - 32 lb) / Punched: 60 - 90 gsm (16 - 24 lb) / Pre-Printed: 75 - 85 gsm (20 - 23 lb) / Recycled: 60 - 85 gsm (16 - 23 lb) / Envelope: 75 - 90 gsm (20 - 24 lb)
Dimension (W x D x H)	554 x 454 x 138 mm (21.8" x 17.9" x 5.4")
Weight	11.8 kg

HCF: High Capacity Cassette Feeder (SL-HCF001B)

Media Size	A5 / Statement / JIS B5 / Executive / Letter / A4 / Folio / Oficio / Legal
Media Type	Plain Paper / Thin Paper / Bond / Punched / Pre-Printed / Recycled / Cotton / CardStock / Letterhead / Thick / Colored / Archive

Media Weight	Plain Paper: 70 - 90 gsm (18 - 24 lb) / Plain Paper (Duplex): 60 - 105 gsm (16 - 28 lb) / Thin Paper: 60 - 69 gsm (16 - 18 lb) / Bond: 105 - 120 gsm (28 - 32 lb) / Punched: 60 - 90 gsm (16 - 24 lb) / Pre-Printed: 75 - 85 gsm (20 - 23 lb) / Recycled: 60 - 85 gsm (16 - 23 lb) / Letterhead: 90 gsm Cotton Paper
Dimension (W x D x H)	554 x 454 x 387 mm (21.8" x 17.9" x 15.2")
Weight	28.0 kg
Short Stand (SL-DSK002S)	Dimension (W x D x H): 554 x 482 x 147 mm (21.8" x 19.0" x 5.8") Weight: 11.3 kg
Cabinet Stand (SL-DSK001T)	Dimension (W x D x H): 554 x 491 x 371 mm (21.8" x 19.3" x 14.6") Weight: 15.5 kg
1-Bin Finisher (SL-FIN001M)	Capacity: 500 Sheets @ 75 g/m ² Staple Cartridge Capacity: 5,000 EA Stacking Finishing Tray: 500 Sheets @ 75 g/m ² Stapling Positions: 1 Position Output Stacking: 500 Sheets @ 75 g/m ² Dimensions: 435 x 386 x 282 mm (17.1" x 15.2" x 11.1") Weight: 10.4 kg
2-Bin Finisher (SL-FIN002M)	Capacity: - Main tray: 500 Sheets @ 75 g/m ² - Top tray: 100 Sheets @ 75 g/m ² Staple Cartridge Capacity: 5,000 EA Stacking Top Tray: 100 Sheets @ 75 g/m ² Stacking Finishing Tray: 500 Sheets @ 75 g/m ² Stapling Positions: 1 Position Output Stacking: 500 Sheets @ 75 g/m ² Dimensions: 502 x 386 x 320 mm (19.8" x 15.2" x 12.6") Weight: 12.8 kg
Multi-Bin Mailbox (SL-MBT0401)	Number of Bins: 4 Capacity: 400 Sheets @ 75 g/m ² (100 Sheets / bin) Dimensions (W x D x H): 360 x 110 x 368 mm (14.2" x 4.3" x 14.5") Weight: 4.44 kg
FDI Kit: Foreign Device Kit (SCX-KIT20F)	Dimensions (W x D x H): 40 x 2 x 63 mm (1.6" x 0.1" x 2.5") Weight: 0.03 kg
Fax Kit (SL-FAX1001)	Compatibility: ITU-T G3 / Super G3 Modem Speed: 33.6 Kbps Resolution: 300 x 300 dpi (Mono) / 200 x 200 dpi (Color)
Wireless + NFC (SL-NWE001X)	Wireless LAN: IEEE 802.11 b/g/n NFC Type: Active Type
Wireless + NFC (SL-NWE001X)	Dimensions (W x D x H): 55 x 205 x 145 mm (2.2" x 8.1" x 5.7") Weight: 0.17 kg
Consumable	Black Toner Cartridge (MLT-D358S): 30,000 Pages Imaging Unit (MLT-R358): 100,000 Pages