

## Legal and additional information

THE NEW  
BUSINESS  
EXPERIENCE

**SAMSUNG.**  
PRINTING INNOVATION.

In modern society, keeping up with technology is crucial to the success of any business or the productivity of any individual. The choice of technology can make a difference to the survival and leadership for them.

As the workplace becomes more digitised and the workforce becomes more mobile, the printer and copier device must also adapt and evolve.

Today, Samsung is applying its ingenuity to develop breakthrough printing solutions that ignite productivity. Only Samsung has the electronics expertise to design and build a printer that meets the needs of today's society.

Printing for the modern world has arrived.  
**Samsung is printing innovation.**

### About Samsung Electronics Co., Ltd.

Samsung Electronics Co., Ltd. is a global leader in technology, opening new possibilities for people everywhere. Through relentless innovation and discovery, we are transforming the worlds of TVs, smartphones, tablets, PCs, cameras, home appliances, printers, LTE systems, medical devices, semiconductors and LED solutions. We employ 286,000 people across 80 countries with annual sales of US\$216.7 billion. To discover more, please visit [www.samsung.com](http://www.samsung.com).



### Real value. True performance.

Always make the right impression by using genuine Samsung supplies.

For more information  
about Samsung Printing Solutions,  
visit [www.samsung.com/PrintingInnovation](http://www.samsung.com/PrintingInnovation)



For more information  
about genuine Samsung supplies,  
visit [www.samsung.com/GenuineSupplies](http://www.samsung.com/GenuineSupplies)



**SAMSUNG**

Copyright © 2014 Samsung Electronics Co., Ltd. All rights reserved. Samsung, Business Core, SecuThru and SmarThru are either trademarks or registered trademarks of Samsung Electronics Co., Ltd. Specifications and designs are subject to change without notice. Non-metric weights and measurements are approximate. All data were deemed correct at time of creation. Samsung is not liable for errors or omissions. All brand, product, service names and logos are trademarks and/or registered trademarks of their respective owners and are hereby recognised and acknowledged.

AirPrint is a trademark of Apple Inc. Android is a trademark of Google Inc. The Android robot is reproduced or modified from work created and shared by Google and used according to terms described in the Creative Commons 3.0 Attribution License. Bonjour is trademark of Apple Inc., registered in the U.S. and other countries. IEEE is a registered trademark of the Institute of Electrical and Electronic Engineers, Inc.

<sup>1</sup> Mobile devices need to support NFC technology.

<sup>2</sup> There is also no app needed for iOS-supported devices using AirPrint™.

Samsung Electronics Co., Ltd.  
129 Samsung-ro, Yeongtong-gu, Suwon-si, Gyeonggi-do 443-742, Korea

[www.samsung.com](http://www.samsung.com)



Samsung Multifunction

# SMART MultiXpress

X4300LX | X4250LX | X4220RX



The New Way of Printing, Innovated for Smarter Business



THE NEW  
BUSINESS  
EXPERIENCE

**SAMSUNG.**  
PRINTING INNOVATION.

**SAMSUNG**

Go beyond your work capabilities with SMART print innovation

## Take business performance to a new level with SMART printing

To keep up with the fast-paced business world, businesses today are embracing Bring-Your-Own-Device (BYOD) policies. This is leading to more efficient, seamless operations and highly productive, always-on employees using SMART intuitive technology in the form of smartphones and cloud computing.

Businesses now want to extend that SMART technology to all devices to gain the same level of intuitiveness and flexibility. A printer is no exception. From scanning to printing, printers are expected to have the same SMART functionalities as cutting edge mobile devices. Businesses seek SMART printing solutions that can be easily managed while still delivering powerful performance at lower costs.

### Samsung's new A3 color MultiFunction Printer (MFP)

SMART MultiXpress X4300LX / X4250LX / X4220RX provide SMART usability that allows users to work faster and more efficiently using intuitive, easy-to-use controls. And with high-performance and cost-efficient features, these printers can meet the print demands of businesses that depend on heavy volume printing, while lowering Total Cost of Ownership (TCO).



Work smarter using the latest in intelligent touch features

## Experience SMART printing, just like using a tablet



### SMART Touch

#### Touch to print, just like on a tablet

The SMART MultiXpress X4300LX / X4250LX / X4220RX provide innovative usability through Samsung SMART User Experience (UX) Center as the very first Smart Android printing UX. Samsung SMART UX Center is a printing UX based on the Android OS and the first of its kind in the printing industry.

This user-friendly UX provides intuitiveness, usability and extendibility at the same time, which ensures perfect compatibility with various Android-based smart devices.

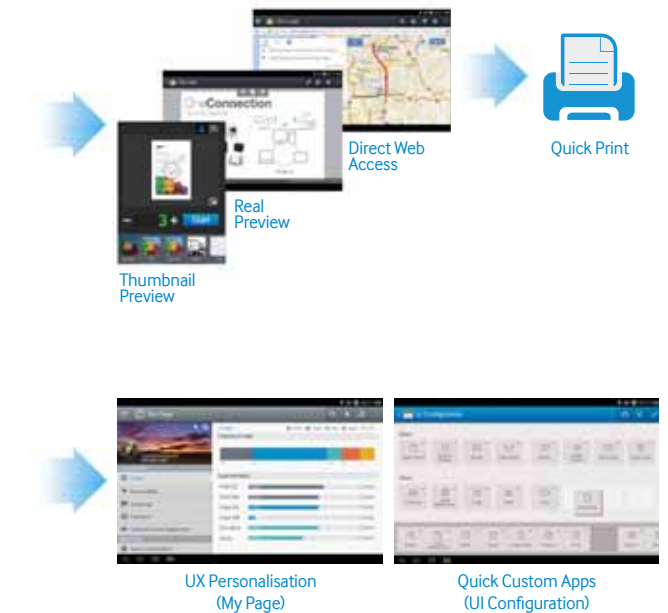
#### Enjoy preloaded applications and widgets

Printing applications are preloaded, including Copy, Scan/Send, Box, Job Status, Counter, Settings, Build Job, Address Book and Help, which provides users with more convenient usability. In addition, there are custom widgets for creating instant, one-tap access to frequently used functions.

### SMART Use

#### Expand use with independent functions and extensibility

The interface also provides the Real Preview function from the preloaded applications, such as Copy, Send and Box. You can further extend usability with direct web access through the web browser to quickly print various web content, such as maps, pictures, emails and more without a PC.



### SMART Manage

#### Personalise the UX through My Page

Enhance the UX by arranging and managing the environment by user with My Page. Simply customise the My Page settings and Quick Menu for each user and you can keep track of an individual's usage, control accessibility and more.

#### Create custom apps and UIs in a snap

Administrators can create quick custom apps directly on the devices by customising the User Interface (UI) configuration in less than a minute.



Process prints and scans at super-fast speeds without sacrificing quality

## Boost productivity with ultra-fast performance

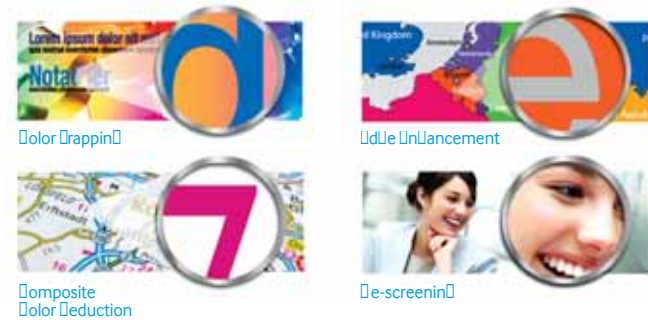
### Work fast, wait less

#### Scan at high rates

SMART MultiXpress X4300LX / X4250 LX / X4220RX printers are equipped with Dual-Scan ADF<sup>1</sup> technology, enabling them to deliver ultra-high, best-in-class scanning speeds. These workhorse MFPs can scan up to 80 single-sided images per minute (ipm)<sup>2</sup>, up to 100 double-sided ipm<sup>3</sup> for color and up to 120<sup>4</sup> double-sided ipm for mono.

#### Faster print processing with zero fuss

SMART MultiXpress X4300LX / X4250LX / X4220RX prints at fast speeds of up to 30 pages per minute (ppm)<sup>5</sup>. A 1 GHz dual-core CPU provides the power and capacity to accomplish print and copy jobs of any size or complexity swiftly. Businesses can work smoothly and operate at a much more efficient level with high-performance speed printing.



#### Get sharper-quality print output

Samsung's unique Rendering Engine for Clean Page (ReCP) technology delivers professional-quality output with sharp text and clean images, ensuring a perfect-looking printout every time. The innovative technology automatically sharpens the focus of both graphics and text. And with a superior resolution of 1,200 x 1,200 effective dpi, your scans, printout and company will always look professional.

<sup>1</sup> Dual-Scan ADF is available on the X4250LX and X4300LX models only.  
<sup>2</sup> 80 single-sided ipm is available on the X4250LX and X4300LX models only. 45 single-sided ipm is available on the X4220RX model only.  
<sup>3</sup> 100 double-sided ipm for color is available on the X4250LX and X4300LX models only. 18 double-sided ipm is available on the X4220RX model only.  
<sup>4</sup> 120 double-sided ipm for mono is available on the X4250LX and X4300LX models only.  
<sup>5</sup> 30 ppm is available on the X4300LX model only. 25 ppm is available on the X4250LX model only. 22 ppm is available on the X4220RX model only.



Manage operational expenses through cost-efficient attributes

## Lower your TCO with cost-efficient solutions and supplies

### Do more jobs, spend less

Create the printing environment that suits your needs with customised, cost-efficient solutions

Samsung's Business Core™ Printing Solutions (BCPS) work as efficiently as you do by providing cost-effective and secure print operation, increasing productivity and simplifying management. These solutions require no dedicated server and IT resources and reduce unnecessary printing and supply use, lowering TCO. These essential printing solutions include:



Business Core Printing Solutions	Benefits
SecuThru Lite 2	Enhances document security and reduces costs with user authentication
Secure Login Manager	Guards valuable data and devices from unauthorised use
SmarThru Workflow Lite	Increases productivity with an automated workflow solution
Cloud Connector	Scans to and prints from the cloud with easy, secure access
Usage Tracker	Controls printing expenses by easily tracking device usage per user
For further customisation, numerous certified partner solutions are available through the Samsung XOa platform.	

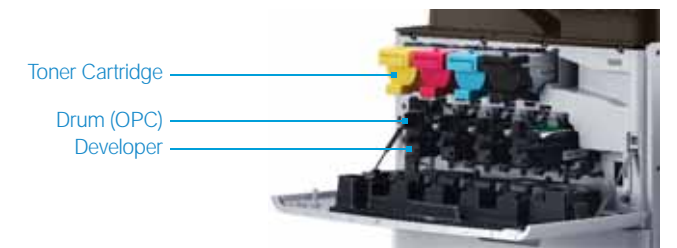
The Samsung Wireless & NFC printing option can be added to support various mobile printing solutions with just a tap, including:

- **User authentication:** Enable authorised users to tap and print to a Samsung MFP from their mobile devices.
- **Secure printing:** Authorise secure release of documents held in the printer's memory with the BCPS and just a tap on your mobile device.
- **Easy wireless setup:** Configure wireless (IP) print setup from your mobile device without complicated activation steps with just a tap.
- **Device cloning:** Clone standardised functions of an MFP with just a tap on your mobile device.



### Save resources with low TCO printing

Businesses can handle heavy printing volumes while reducing labor costs with the X4300 Series' ultra-high-yield toner cartridges and drums. Flexible options range from toners that yield 20,000 standard pages for color to 23,000 for black and white, while drums yield 100,000 standard pages. These long-life consumables ensure businesses get the most out of their resources, resulting in lower TCO.



Customise your MFP with a flexible print solution

## Select from a range of options to create a tailor-made MFP

### Configurable devices for optimised performance

Businesses of varying sizes and industries can meet their specific needs with the SMART MultiXpress X4300LX / X4250LX / X4220RX's unique configuration capabilities. Factory-provided modules serve as a basis upon which differing components are chosen along with a wide array of optional components.

### Configurations & Options

**Finisher**

- 550 sheet capacity
- Right, center, left stapling up to 50 sheets

or

**Job Separator**

- Ext. output stacker
- 125-sheet capacity

**Dual Fax Kit** or **Fax Kit**

**Additional Network Kit** or **FDI Kit**

**Dual-Cassette Feeder** or **Stand**

- 1,040 sheet capacity
- Paper empty / size detection
- Cabinet stand

**Wireless & NFC Option**

- IEEE 802.11 b/g/n
- NFC (Active type)

**DSDF (standard) Dual Scan Automatic Document Feeder**

- X4300LX / X4250LX

**RADF Reverse Automatic Document Feeder**

- X4220RX model only

- 100-sheet capacity
- Single-pass 2-sided document scanning
- Paper empty / width / length detection

**Multi-purpose Table** or **Working Table**

## Samsung Multifunction SMART MultiXpress X4300LX | X4250LX | X4220RX

## Technical details made to support your business

### General Specifications

Speed	- X4300LX: 30/30 ppm - X4250LX: 25/25 ppm - X4220RX: 22/22 ppm
Processor	1 GHz Dual Core
Memory	2 GB DDR3 Memory
Operational Panel	10.1" Color Touch-Panel LCD (960 x 600)
Interface	USB 2.0, Ethernet 10/100/1000 BaseTX, IEEE802.11 b/g/n (Optional)
Duty Cycle. Monthly	- X4300LX: 120,000 pages - X4250LX: 110,000 pages - X4220RX: 100,000 pages
Dimensions (W x D x H)	566 x 610 x 879 mm (22.3" x 24" x 34.6")
Weight	X4300LX, X4250LX: 80 kg (inc. DSDF), X4220RX: 79 kg (inc. RADF)
Network Protocols	IP Management (DHCP, BOOTP, AutoIP, SetIP, Static) / Discovery Protocol (SLP, UPnP, Bonjour, DNS, WINS) / Printing Protocol (TCP/IP, LPR, IPP, WSD) / Management Protocol (SNMPv1.2, SNMP3, SMTP, Telnet) / Scan Protocol (SMTP, FTP, SMB, WSD) / Security Protocol (SMB, Kerberos, LDAP, IPsec, EAP)
Network Security	SSL / TLS, IP Sec, SNMPv3, Protocol & Port Management, IPv6, IP/MAC Filtering, IEEE 802.1x support (Optional)
OS Compatibility	- Windows: XP (32 / 64 bit) / 2003 Server (32 / 64 bit) / Vista (32 / 64 bit) / 2008 Server (32 / 64 bit) / 7 (32 / 64 bit) / 2008 Server R2 / Windows 8 (32 / 64 bit) / Windows 8.1 (32 / 64 bit) / Windows Server 2012 (32 / 64 bit) / Windows Server 2012 R2 - Mac OS 10.5 - 10.9 - Linux: Red Hat Enterprise Linux 5 / 6, Fedora 11 / 12 / 13 / 14 / 15 / 16 / 17 / 18 / 19, openSUSE 11.0 / 11.1 / 11.2 / 11.3 / 11.4 / 12.1 / 12.2 / 12.3, Ubuntu 10.04 / 10.10 / 11.04 / 11.10 / 12.04 / 12.10 / 13.04, SUSE Linux Enterprise Desktop 10 / 11, Debian 5.0 / 6.0 / 7.0 / 7.1, Mint 13 / 14 / 15 - UNIX: Sun Solaris 9 / 10 / 11 (x86, SPARC), HP-UX 11.0 / 11i v1 / 11i v2 / 11i v3 (PA-RISC, Itanium), IBM AIX 5.1 / 5.2 / 5.3 / 5.4 / 6.1 / 7.1 (PowerPC)
Power Consumption	1.5 W (Sleep) / 200 Wh (Ready) / 1.2 kWh (Max)

### Paper Handling

Input Capacity & Types	2,180 Sheets @ 80 g/m <sup>2</sup> (1,140-Sheet Standard + 1,040-Sheet Optional DCF)
Media Size	- MP Tray: 98 x 148 mm - 297 x 432 mm (3.8" x 5.8" - 11.7" x 17") - Tray1: 148.5 x 210 mm - 297 x 354 mm (5.8" x 8.2" - 11.7" x 14") - Tray2: 148.5 x 210 mm - 297 x 432 mm (5.8" x 8.2" - 11.7" x 17")
Media Type	Plain / Thin / Bond / Hole Punched / Pre-Printed / Recycled / Thin CardStock / Letterhead / Thick / Cotton / Colored / Archive / Thin Glossy / Heavy weight / Extra heavy weight
Media Weight	Tray 1&2: 60 - 220 g/m <sup>2</sup> (16 - 47 lb) MP Tray: 60 - 175 g/m <sup>2</sup> (16 - 59 lb)
ADF Document Size	Ledger / Letter / Legal / Oficio / Folio / A3 / A4 / JIS B5 / ISO B5 / Executive / A5 / Statement / Custom
ADF Capacity	100 Sheets @ 80 g/m <sup>2</sup>

### Copy Specification

First Copy Out Time	- X4300LX: 5.9 / 7.6 sec - X4250LX: 6.6 / 8.2 sec - X4220RX: 7.2 / 9 sec
Resolution	Up to 600 x 600 dpi
Zoom Rate	25% - 400%
Multi Copy	Up to 9,999
Copy Features	ID Copy / N-up / Booklet / Image Repeat / Auto Fit / Book Copy / Poster Copy / Watermark / Image Overlay / Stamp / Covers / Job Build / Preview

### Print Specification

Resolution	Up to 1,200 x 1,200 dpi
Emulation	PCL5e / PCL6 / PostScript 3 / PDF
Direct Print Support	PRN / PDF / TIFF / JPEG / XPS

### Scanner Specification

Speed	X4300LX, X4250LX: Simplex 80/80 ipm (Mono / Color), Duplex 120/100 ipm (Mono / Color) X4220RX: Simplex 45/45 ipm (Mono/Color)
Compatibility	Network TWAIN, Network SANE
Scan File Formats	PDF / Compact PDF / Searchable PDF / JPEG / XPS / TIFF-S / TIFF-M / TIFF
Resolution	600 x 600 dpi (Optical), 4,800 x 4,800 dpi (Enhanced)
Scan to Destination	Email / FTP / SMB / HDD / USB / WSD / PC

### Fax Specification (Optional)

Modem Speed	33.6 kbps - 2,400 bps with Automatic Speed Selection
Compatibility	ITU-T G3, Super G3
Resolution	203 x 98 dpi (Std), 203 x 196 dpi (Fin), 300 x 300 dpi (Super. Fine), 600 x 600 dpi (Ultra. Fine)
Fax Functions	Auto Redial, Caller ID, Secure Reception, Fax forwarding to Fax / Email / SMB / FTP / Box, Job Build, Preview, Dual line (Opt), etc.
Max. Line	2nd lines

### Options

<b>Double Cassette Feeder (SL-PFP502D)</b>	
Input Capacity	1,040 Sheets (520 Sheets x 2)
Media Size	148 x 210 mm - 297 x 432 mm (3.87" x 8.2" - 11.7" x 17")
Media Weight	60 - 220 g/m <sup>2</sup> (16 - 59 lb)
Dimensions (W x D x H)	566 x 610 x 265 mm (22.3" x 24" x 10")
Weight	20 kg (44 lb)
<b>Inner Finisher (SL-FIN501L)</b>	
Output Capacity	550 Sheets (Main 500, Top 50) @ 80 gsm
Media Size	Main: 98 - 320 mm x 140 - 457.2 mm (3.85" x 12.6" - 5.5" x 17.8") Top: 140 - 297 mm x 210 - 432 mm (5.5" x 11.7" - 8.2" x 17")
Media Weight	Main: 52 - 300 g/m <sup>2</sup> Top: 52 - 256 g/m <sup>2</sup>
Staple Capacity	50 Sheets
Dimensions (W x D x H)	665 x 491 x 220 mm (26.2" x 19.3" x 8.7")
Weight	15 kg (33 lb)

### Job Separator (SL-JSP500S)

Media Capacity	125 Sheets
Media Size	148 x 98 mm - 297 x 432 mm (3.87" x 5.8" - 11.7" x 17")
Media Weight	60 - 220 g/m <sup>2</sup> (16-59 lb)
Dimensions (W x D x H)	395.3 x 380.5 x 96.6 mm (15.6" x 15" x 3.8")
Weight	1.5 kg (3.3 lb)

### Others

General	Cabinet, Working Table, Multi-purpose Tray
Network	Wireless / NFC Kit, Additional LAN Kit, FDI Kit, Fax Kit, Dual Fax Kit

### Consumable

Black Toner Cartridge	23,000 pages
Color Toner Cartridge (C/M/Y)	20,000 pages
Black Drum	100,000 pages
Color Drum (C/M/Y)	100,000 pages
Estimated Toner Yields @ 5% coverage For best performance and yield, we recommend using genuine Samsung parts and consumables.	